

Strawberry Jam

ANDOVER FABRICS



Very Berry Quilt designed
by **Janet Houts**
Quilt Size: **68" x 80"**
andoverfabrics.com

About Strawberry Jam

Our new line, Strawberry Jam, is as sweet as can be!
Tossed strawberries, mini dots and florals are the
perfect breeze to welcome in Spring sewing.

andover • makower.uk

Free Pattern Download Available

1384 Broadway New York, NY 10018
Tel. (800) 223-5678 • andoverfabrics.com



9361-B Fat 1/8 yd



9361-L



9362-B Fat 1/4 yd



9362-L 3/8 yd



9364-B



9364-L 1 1/8 yds



9364-R 3/4 yd



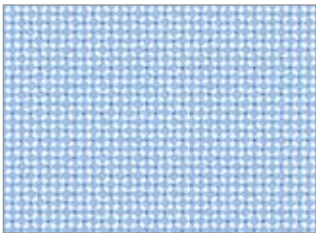
9365-B 1/2 yd (extra yds needed for backing)



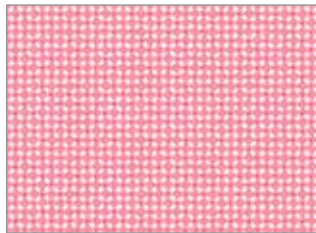
9365-R 5/8 yd



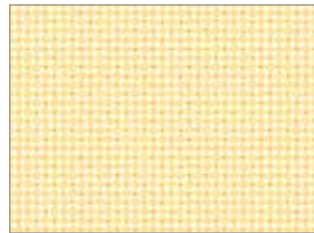
9365-Y



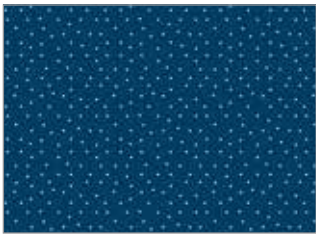
9368-B



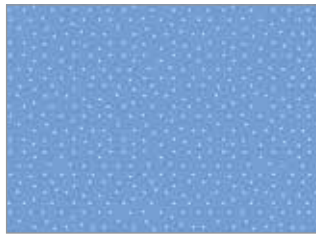
9368-R 3/8 yd



9368-Y



9370-B



9370-BL



9370-L 3 1/2 yds

FABRIC	5 KITS	10 KITS	20 KITS
9370-L	2	3	5
9364-L	1	1	2
FROM EACH	1	1	1
9361-B	9362-B	9362-L	
9364-R	*9365-B	9365-R	
9368-R	9370-R		

Strawberry Jam

ANDOVER FABRICS

andover

makower uk